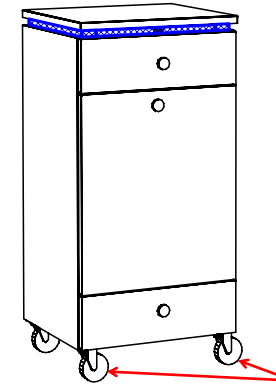
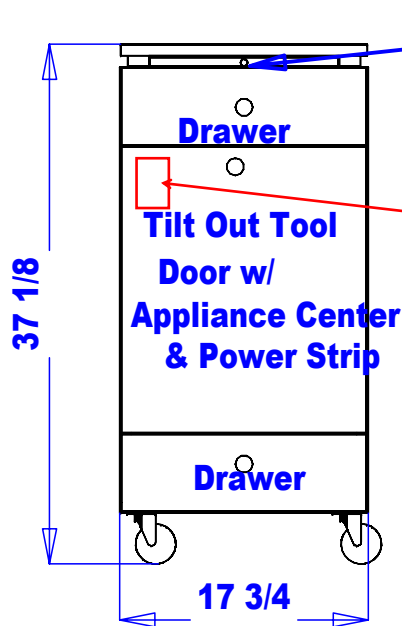


INSTALLATION INSTRUCTIONS

- 1. Flip all knobs/pulls from inside cabinet to outside, reference diagram 1.
- 2. Install Appliance Center see diagram 3 for details.
- 3. See power strip instructions below.



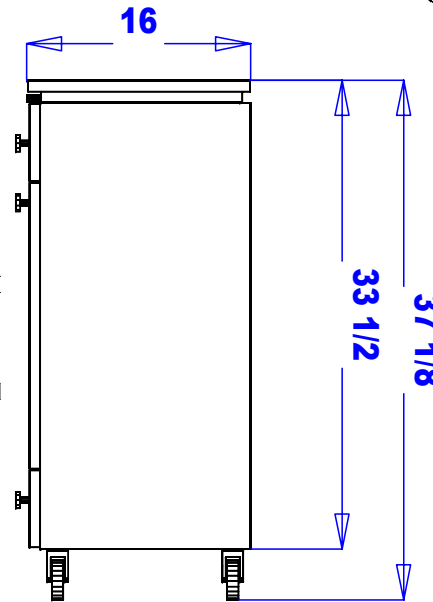
NOTE: Front two casters can be locked to make the unit stationary if desired.



Breadboard

POWER STRIP INSTRUCTIONS

- 1. Mount power strip on mounting screws inside the cabinet at the location shown to the left.
- 2. Cord exits through grommet hole in the bottom/rear of cabinet.



Quantity -

Finish Schedule

- Face Color -
- Top Color -
- Toe Color -
- Pulls -
- Interior -
- Other (Specify) -

Installation Notes:

- 1. All hardware needed for assembly is included.
- 2. Large items are preassembled at the factory to ensure proper alignment. Items are then disassembled into manageable sections for shipping purposes and ease of reassembly.
- 3. Shipping cleats need to be removed before installation. These cleats are installed to prevent damage.

This drawing is the property of Collins Manufacturing Company and is protected under copyright law.

collins		Collins Manufacturing 809 E 20th Street Cookeville TN 38501
Title: QSEp Portable Styling Station		
Size:	#: 400-18	Drawn By:
Date: 11/14/04	Sheet #: 2	