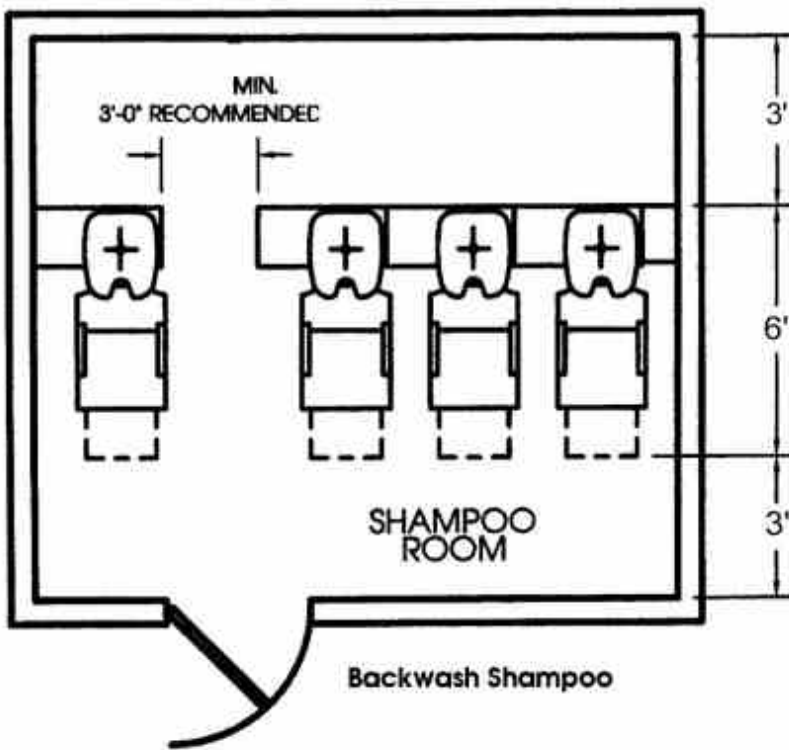


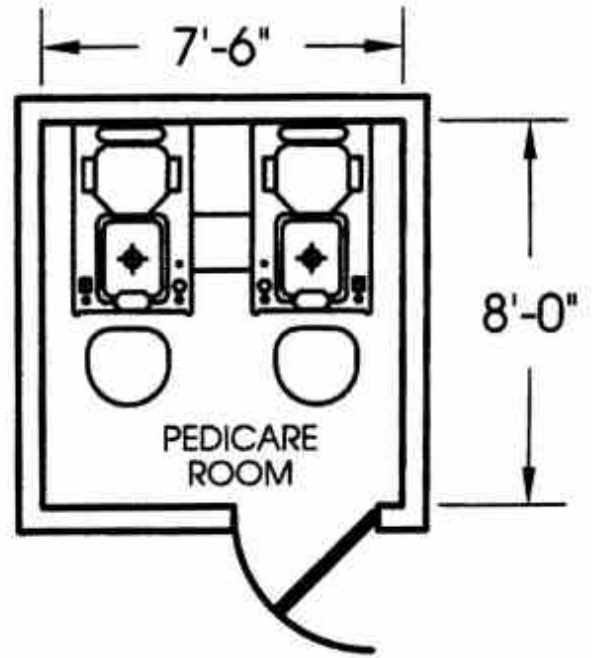
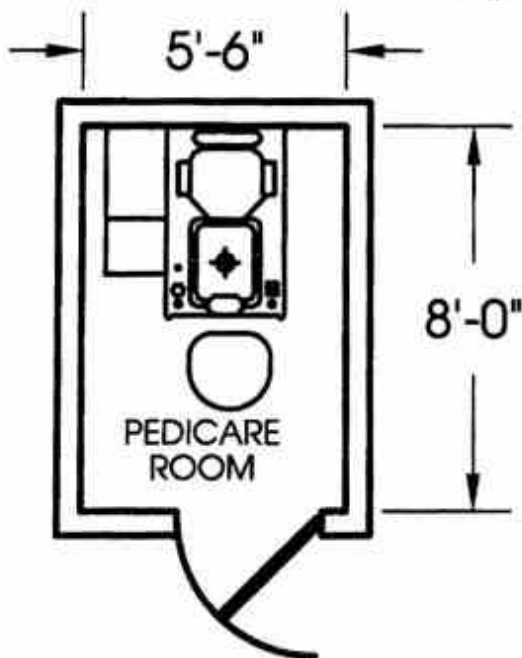
Backwash Shampoo:



Backwash Shampoo:

1. Allow 32" left-to-right for each unit,
2. Allow 36" behind the unit for stylists.
3. Allow 48" for conventional chairs, or 72" for chairs w/ kickout.
4. Allow 36" in front of chairs.
5. Allow 30" to 36" for aisles.
6. Overall, allow 12' front-to-back, or 11' as a minimum.

Pedicure Units:



The side of the pedicure sink unit opposite the stairs must be placed 13' away from the wall. Room size for a single pedicure station 8'-0" X 5'-6" (44 square foot). Room size for a double pedicure station 8'-0" X 7'-6" (60 square foot)