

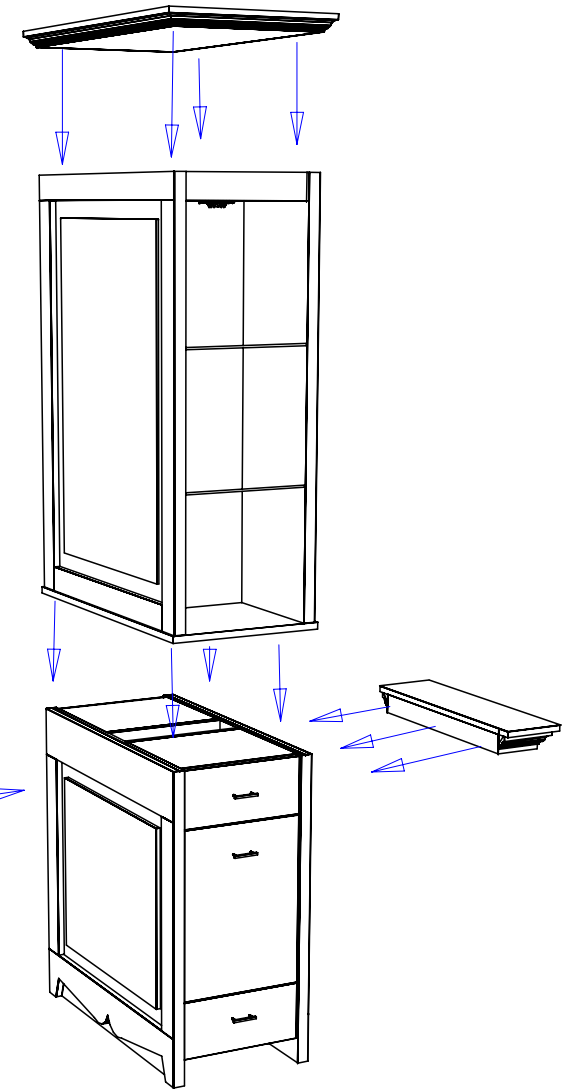
Attach upper cabinet to the lower cabinet by setting upper cabinet on top of lower cabinet and bolting through the stretchers into the top with the bolts provided. Tighten securely.

Purse shelves should be attached by bolting through the back of the shelf into the cabinet with the bolts provided.

Eyeball light fixtures are provided with a 2' cord. Electrician should cut hole for cord and provide the power supply. Bulb is 40w - reflector type.

Attach the upper cap to the upper cabinet by screwing down through the cap with wood screws provided.

Mirrors are provided with mirror clips and wood screws. Attach one mirror clip at each corner approximately 2" in from the vertical edge.




Quantity - Qty

Finish Schedule - 883-36-1

Face Color - Face Color
 Top Color - Top Color
 Toe Color - (Specify)
 Pulls - Black wire
 Interior -
 Other (Specify) -

General Notes:

1. All counter tops are to be made removable wherever possible.
2. Items must be broken into manageable sections For Shipping. Mark For Ease Of Reassembly.
3. Install Shipping Cleats Wherever Possible To Prevent Shipping Damage.
4. Purchased items Must Be Trial Fit Before Shipping.

 Collins Manufacturing 2000 Bowser Rd. Cookeville TN 38506		Title: Customer Name	
		Size:	# SoNumber
Date: 03/17/06		Sheet #: 5	